



CERTIFICATE of PAYMENT of TAXES
I, the undersigned, being duly appointed and qualified Clerk for the Fairbanks North Star Borough, do hereby certify that according to the records of the Fairbanks North Star Borough, the following described property is carried on the tax records in the name of Arvil Still & Linda Still and that, according to the records in my possession, all taxes assessed and due against said land and in favor of the Fairbanks North Star Borough, paid in full.
Dated at Fairbanks, Alaska, this 14 day of January, 1983

Arvil Still
Clerk, Fairbanks North Star Borough

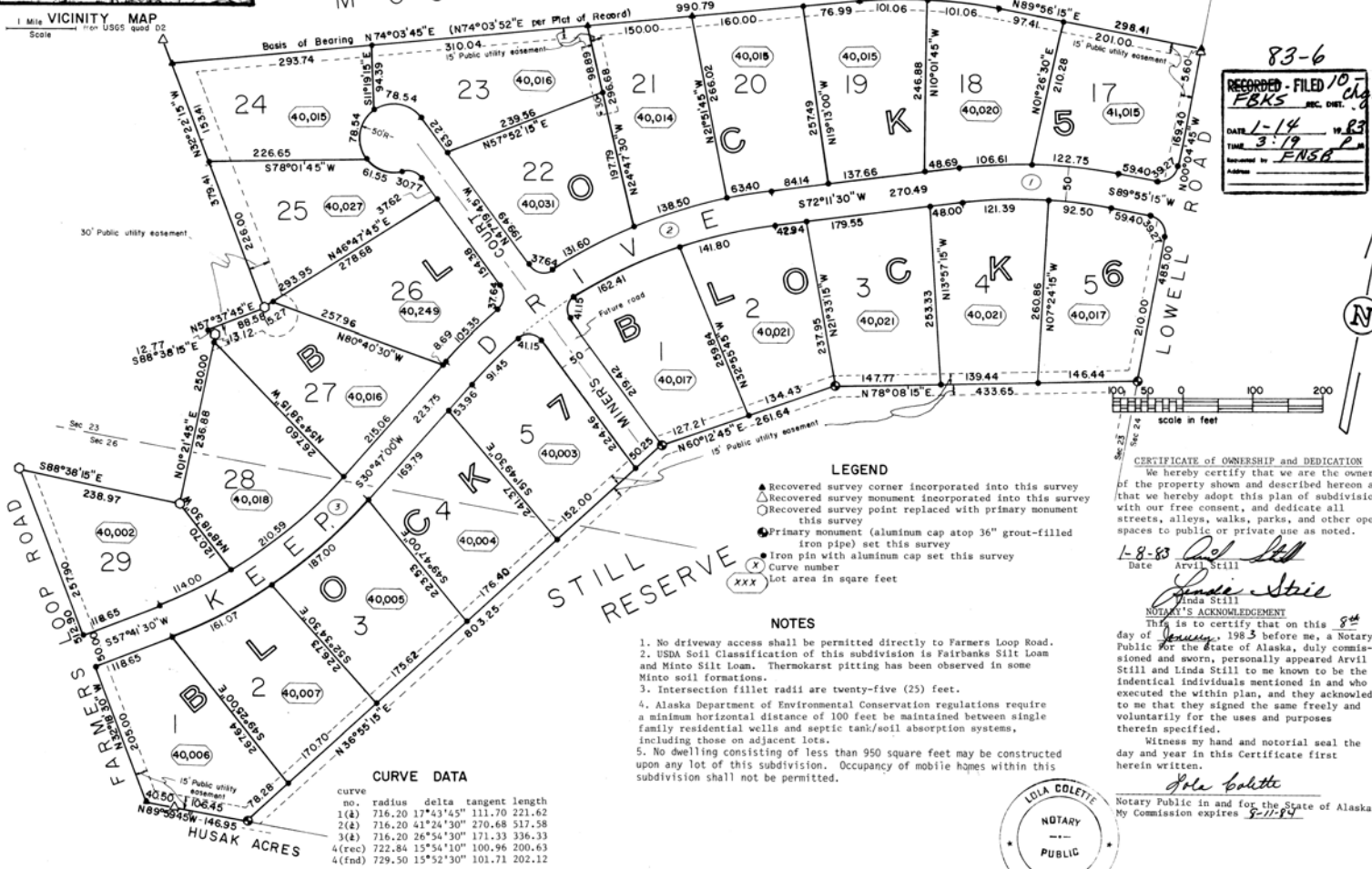
CERTIFICATE of REGISTERED LAND SURVEYOR
I, Kenneth M. Colette, a professional Land Surveyor duly registered under the laws of the State of Alaska, do hereby certify that this plat represents the survey made by me or under my direct supervision and that this is a true and correct representation of the lands surveyed and all compliance has been made with all of the applicable requirements of Fairbanks North Star Borough Regulation Section 17.16.030, Monuments.
Dated at Fairbanks, Alaska, this 14 day of January, 1983

Kenneth M. Colette
Kenneth M. Colette, 39505

CERTIFICATE of APPROVAL by the PLATTING BOARD
I hereby certify that the subdivision plat shown hereon has been found to comply with the regulations of Title 17, Planning and Zoning, of the Fairbanks North Star Borough Code of Ordinances, and that said plat has been approved by the board, motion of Jan 12, 1983 and that the plat shown hereon has been approved for recording in the Fairbanks Recording District, Fairbanks, Alaska, Dated at Fairbanks, Alaska, this 14 day of Jan, 1983

Janette Owens
Chairman, Fairbanks North Star Borough
Platting Board
Clerk

THIRD PHASE MOUNTAIN VIEW SUBDIVISION



REVISIONS	BY

ENGINEERING ASSISTANCE COMPANY
152 Third Avenue
Fairbanks, Alaska 99701

ph 452-5317

MOUNTAIN VIEW SUBDIVISION FOURTH PHASE	
Located within sections 23 and 26 of T.1N.R.W. FM	T.1N.R.W. FM
Containing 211.56 1st acres	Still
Prepared for Arvil and Linda Still	